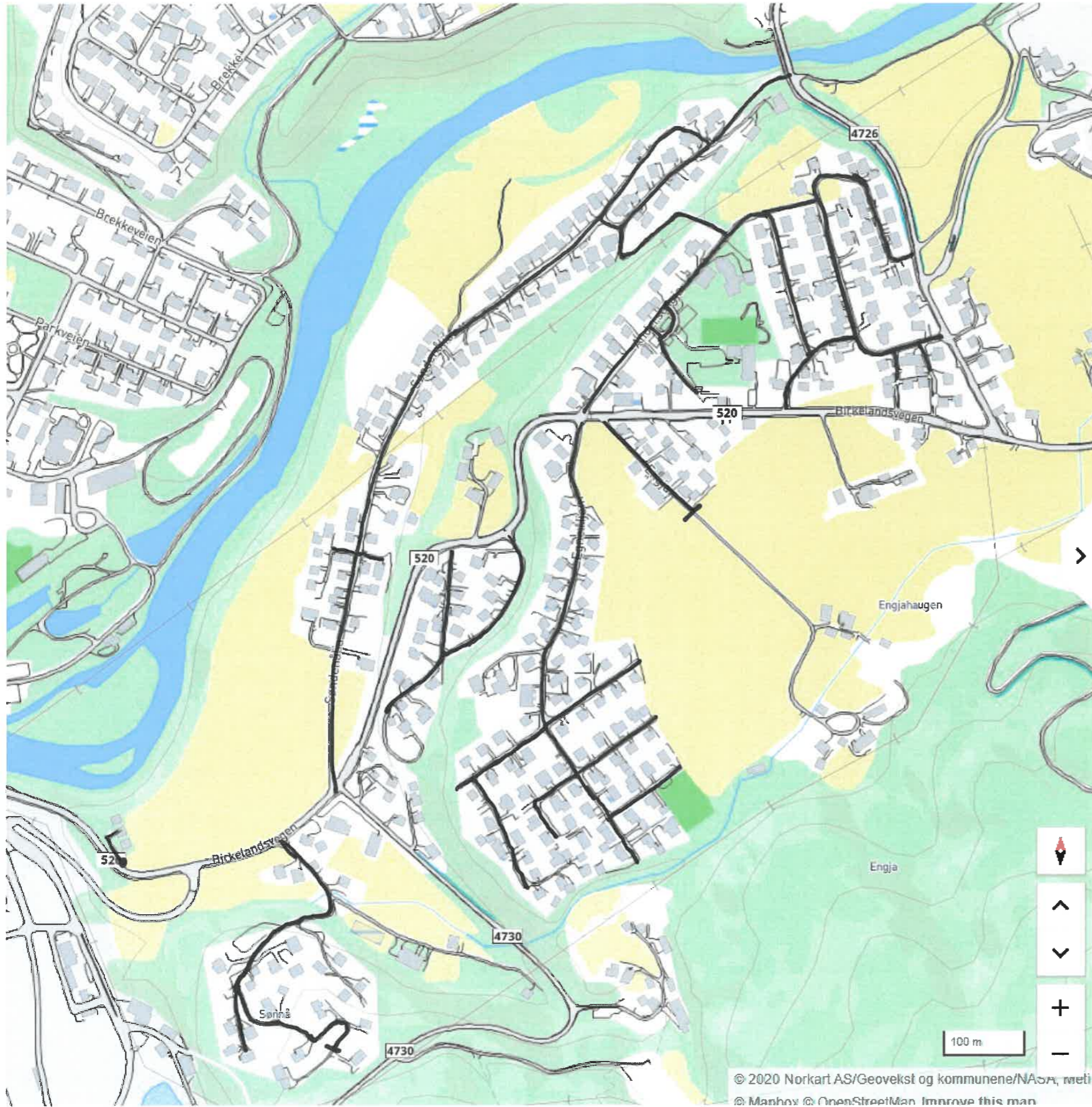


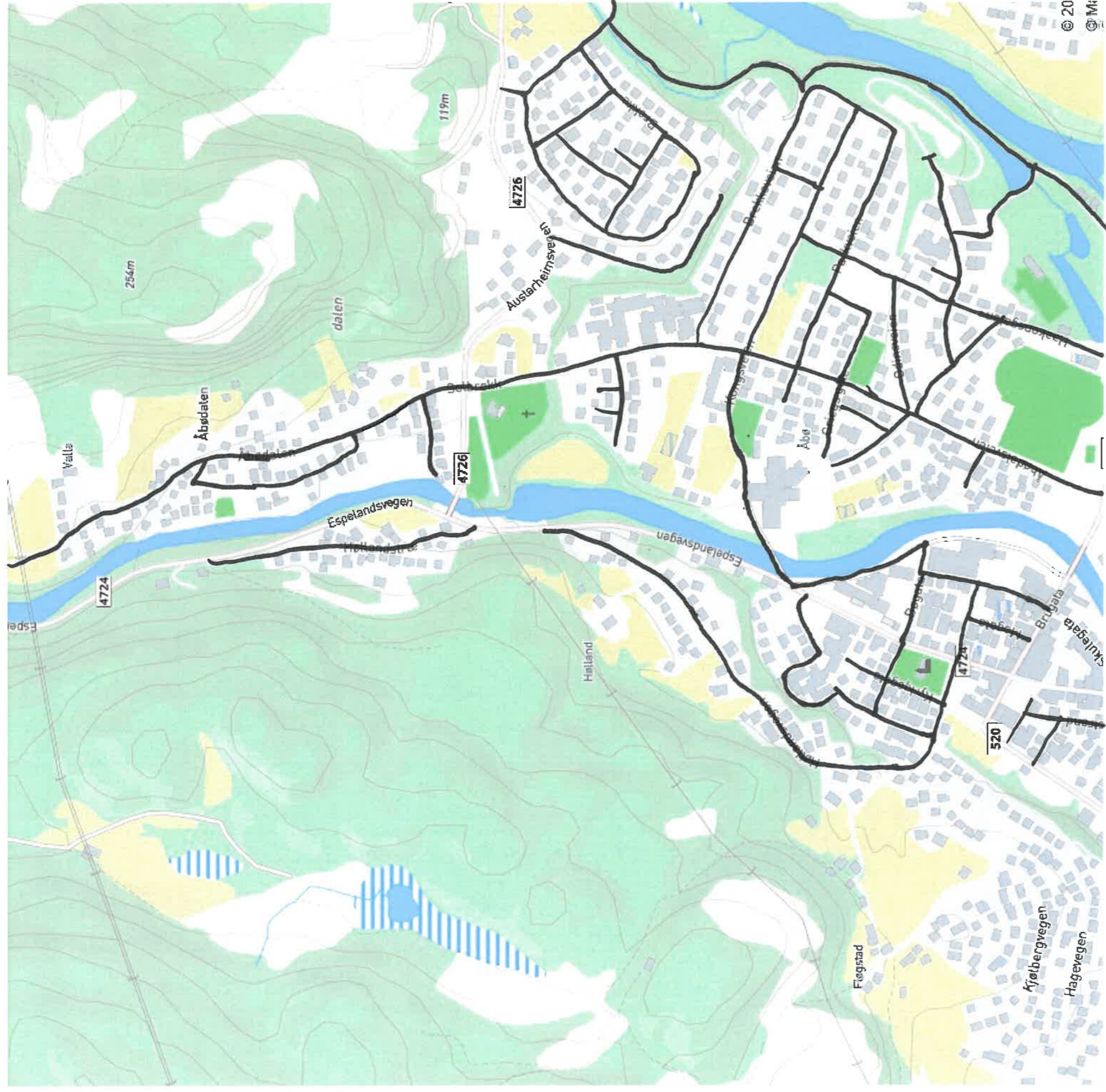
1.



Rute 2: Åbødalen, Djupadalen, Espeland/tre, Høllandstre, Hølland



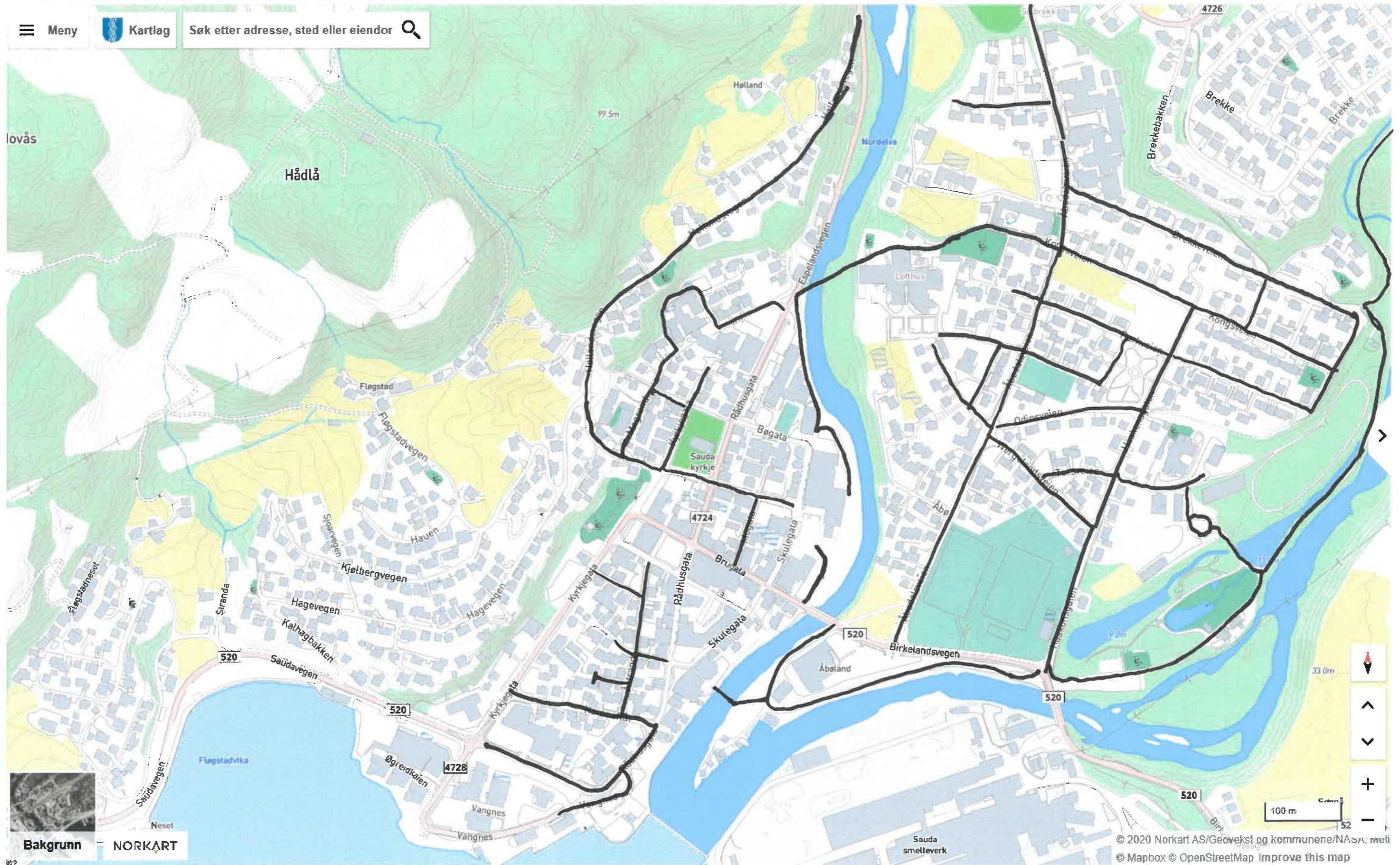
Rute 2: Åbødalene, Djupadalen, Espeland/tre, Høllandstre, Hølland



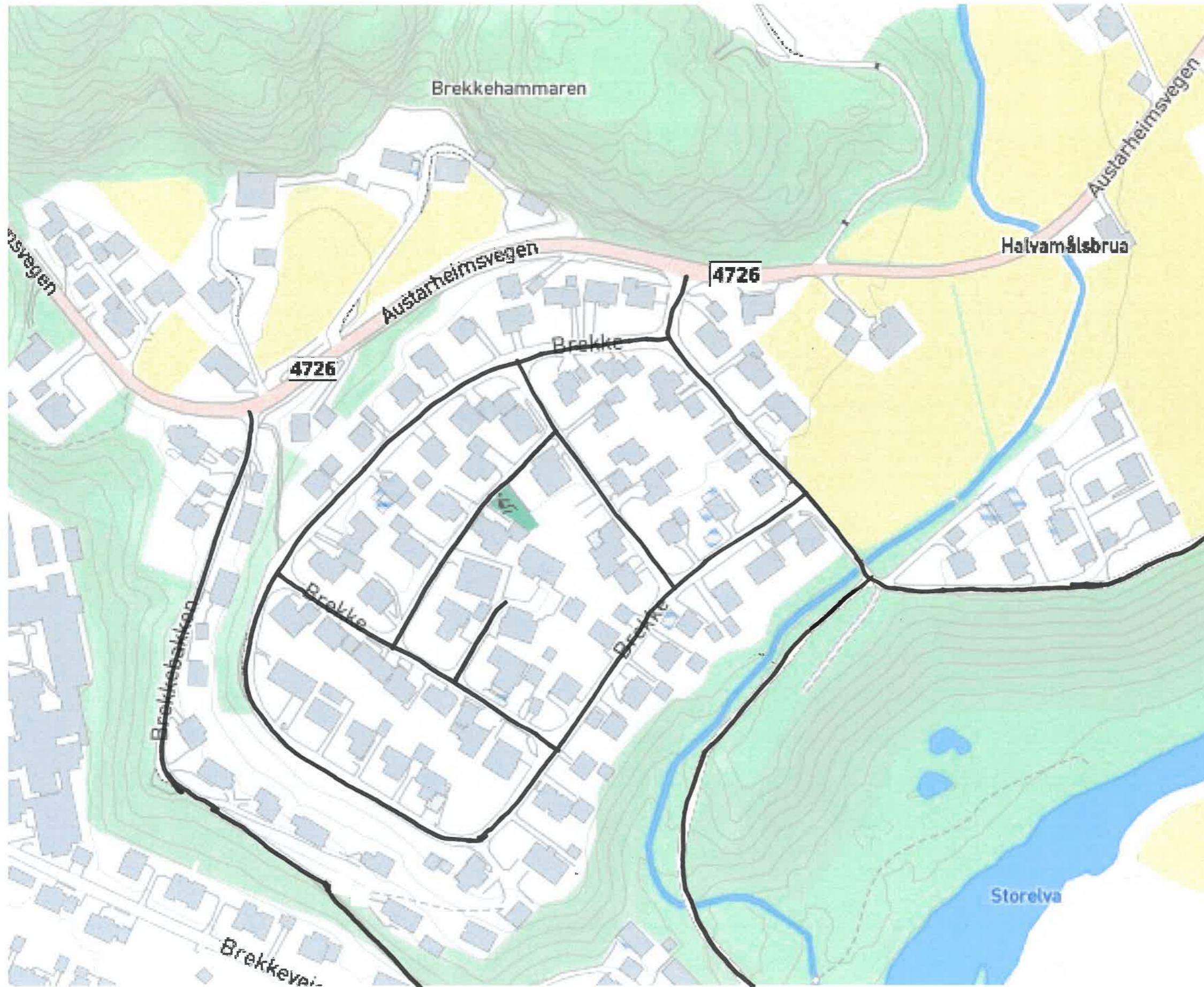
Rute 3 – Liabakken, Fløgstad, Fløgstadneset, Tråsavikåsen, Golan, Grønsdal, Ringhagen, Neshaugen, Myrabakken



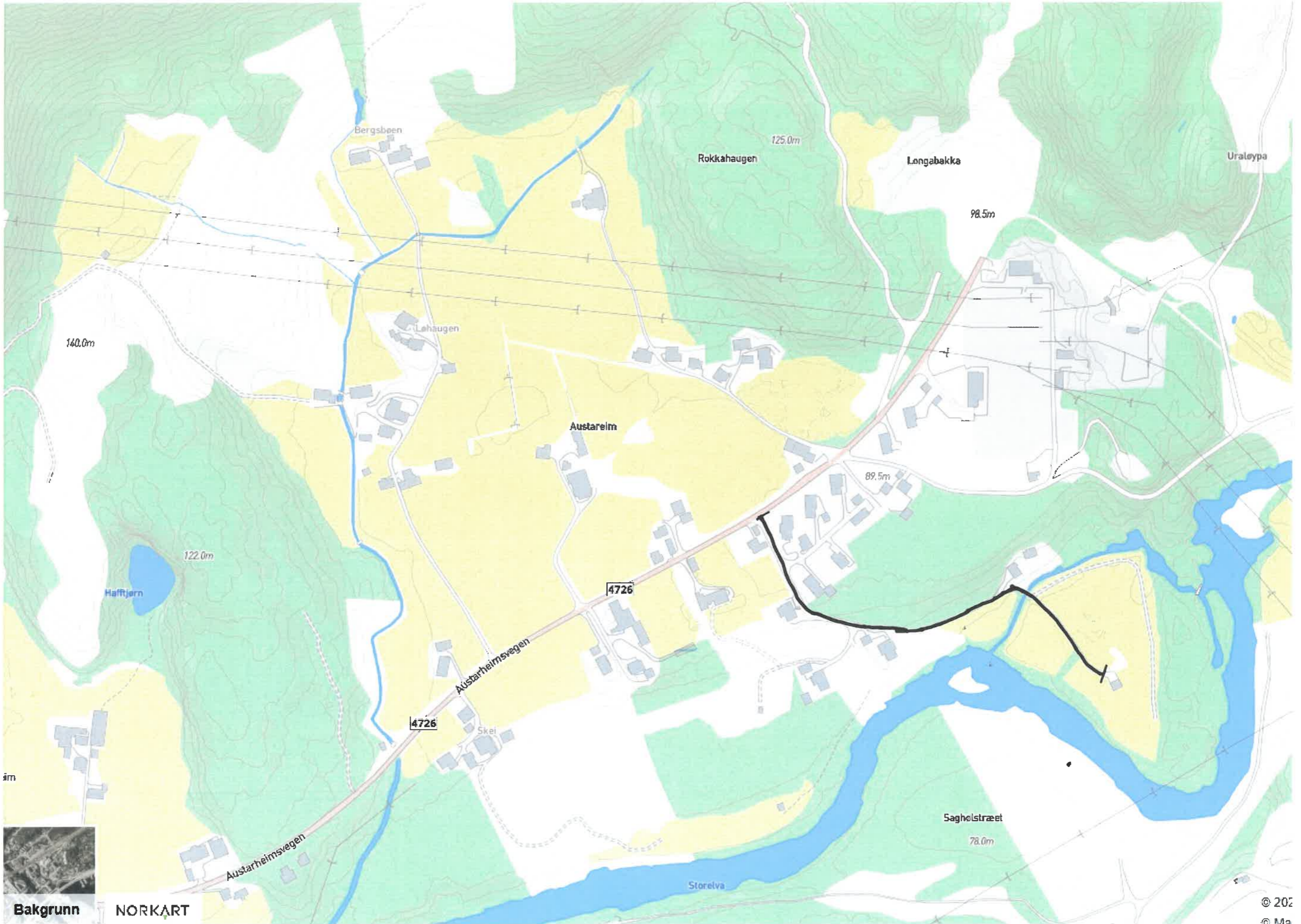
Rute 6 – Åbøbyn, sentrum, kaien



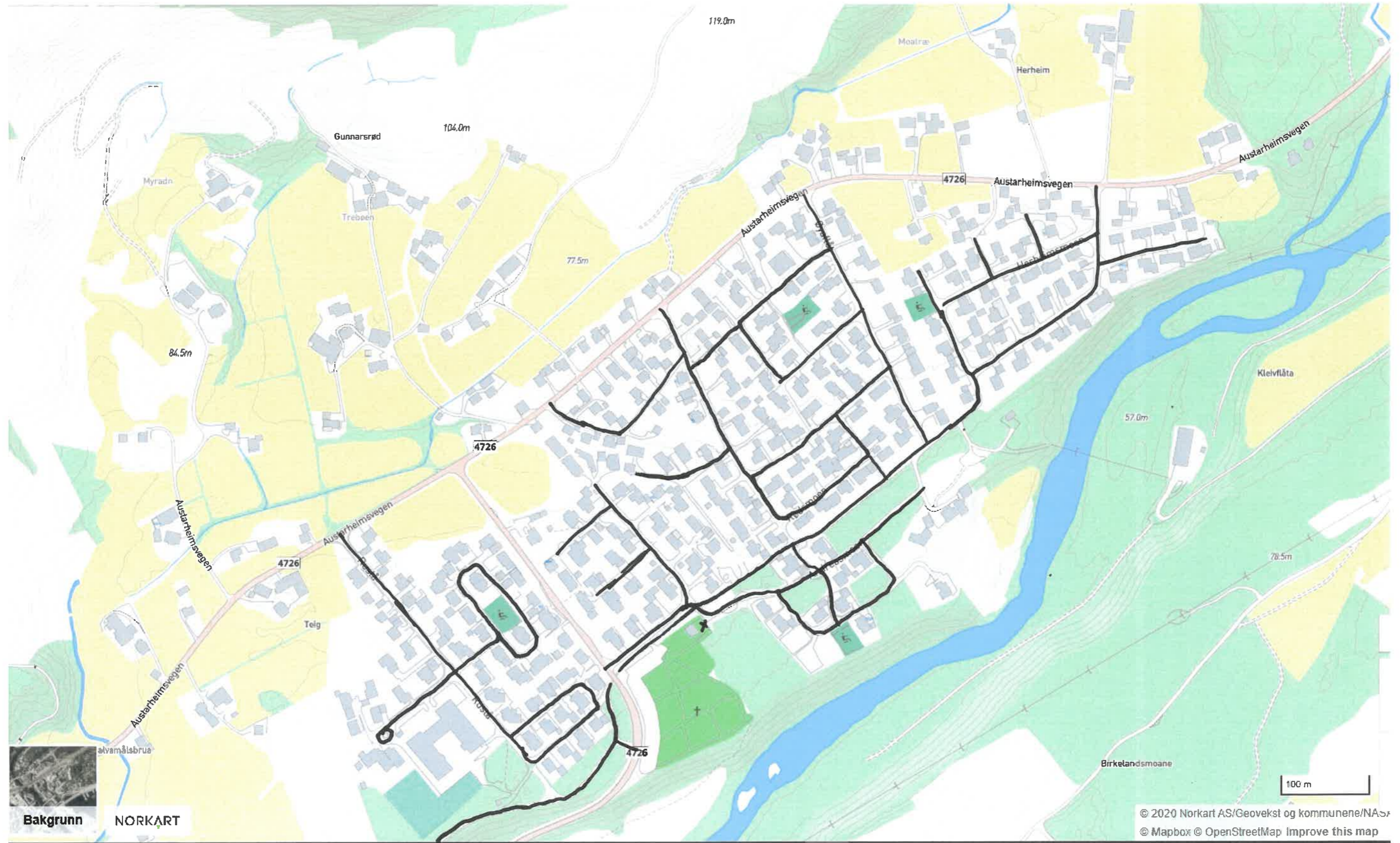
Rute 7: Rød, Rustå, Brekke, Sykkelsti, Brekkebakken



Rute 7: Rød, Rustå, Brekke, Sykkelsti, Brekkebakken



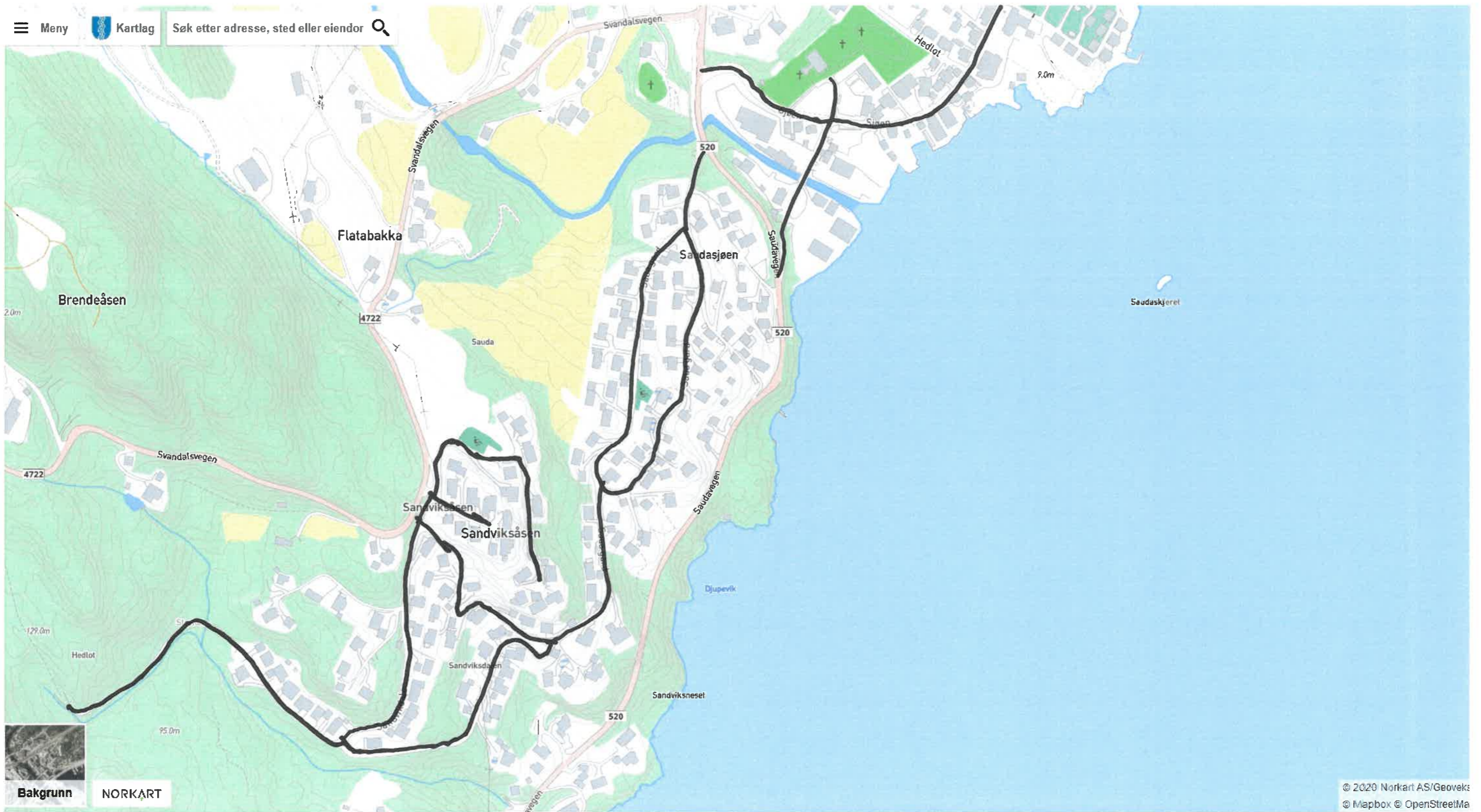
Rute 7: Rød, Rustå, Brekke, Sykkelsti, Brekkebakken



Bakgrunn NORKART

© 2020 Norkart AS/Geovekst og kommunene/NA
© Mapbox © OpenStreetMap Improve this map

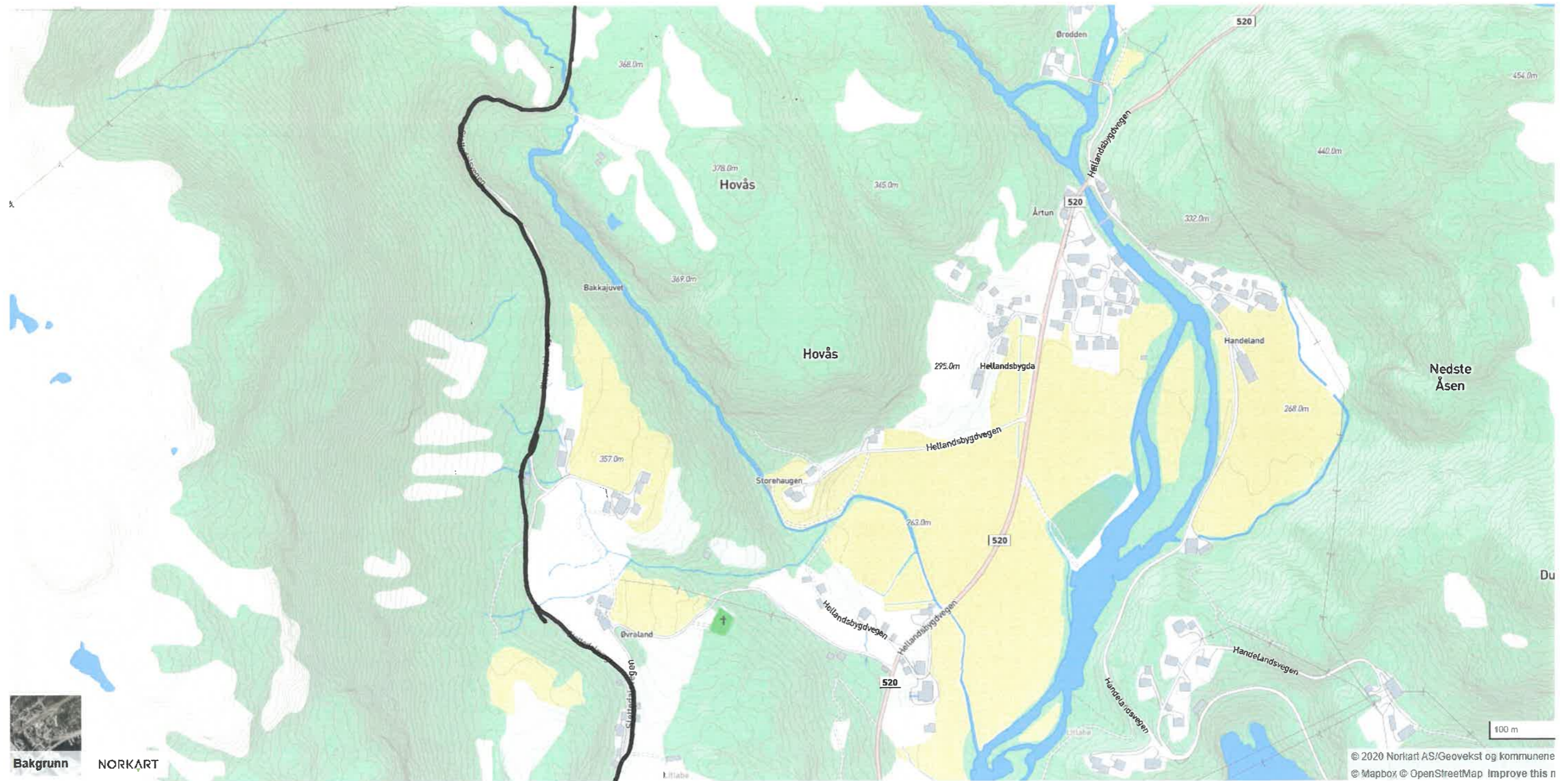
Rute 9: Saudasjøen, Lyngmyr, Saua Gård, sandvikdalen, Gausvik



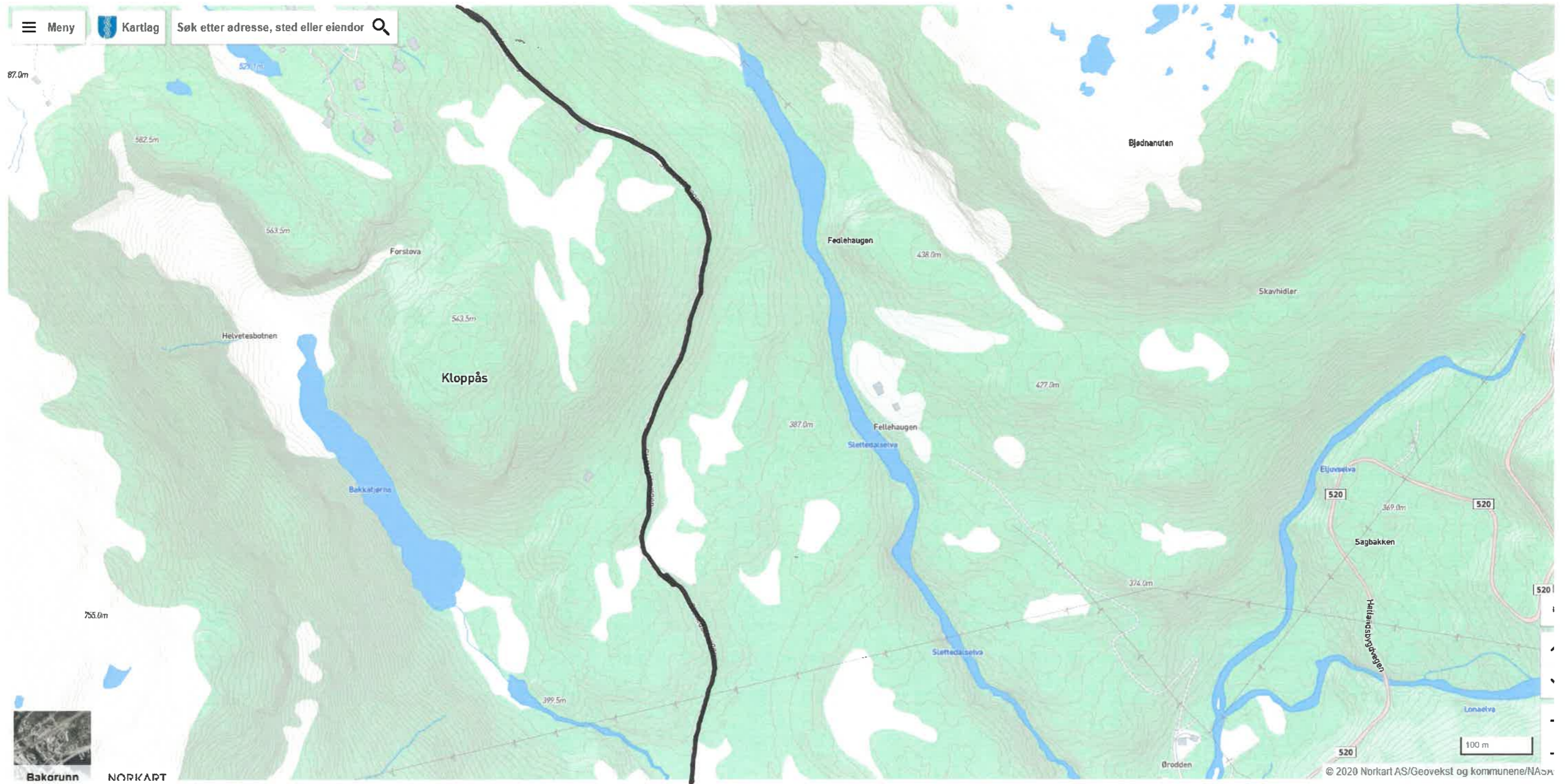
Rute 10: Linjekryss/Slettedalen, Hellandsbygd



Rute 10: Linjekryss/Slettedalen, Hellandsbygd



Rute 10: Linjekryss/Slettedalen, Hellandsbygd



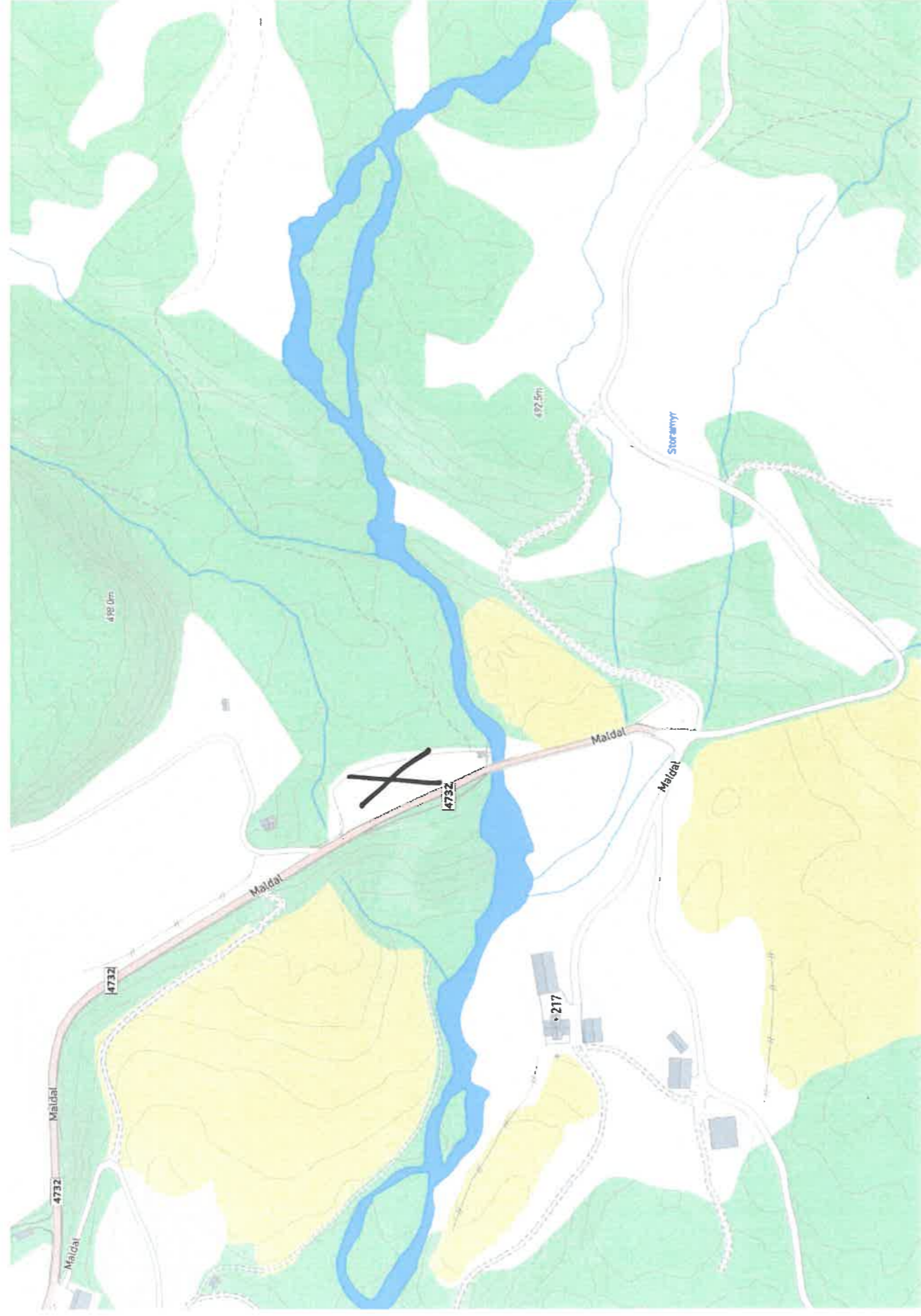
Rute 10: Linjekryss/Slettedalen, Hellandsbygd



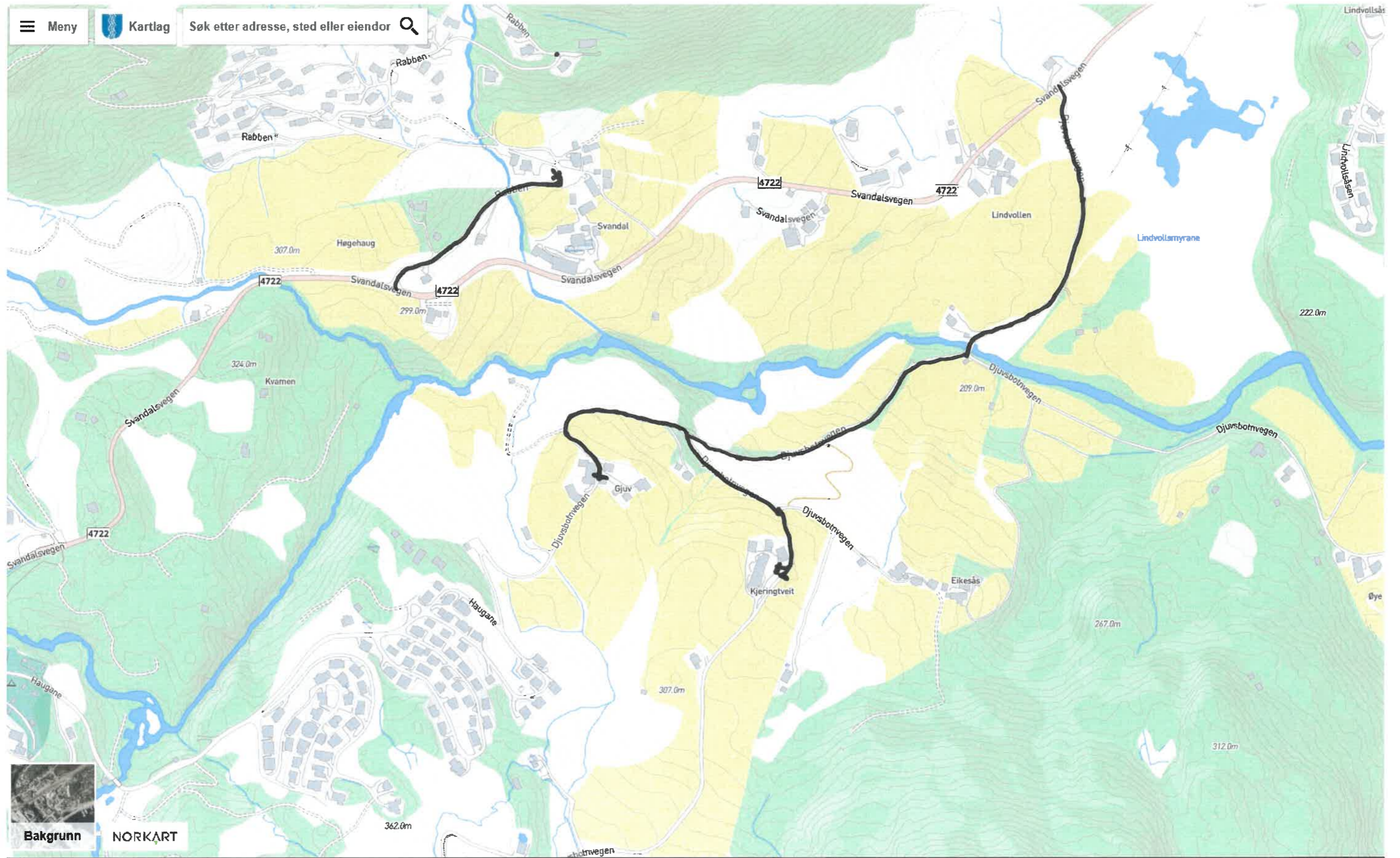
Rute 11: Molla – vei ned



Rute 12: Maldal - parkeringsplass



Rute 13: Svandalen, Djuv, Kjerringtveit, Rabbane





Bakgrunn

NORKART

Rute 14: Hustveit, Storskjær, Honganvik



Rute 14: Hustveit, Storskjær, Honganvik

